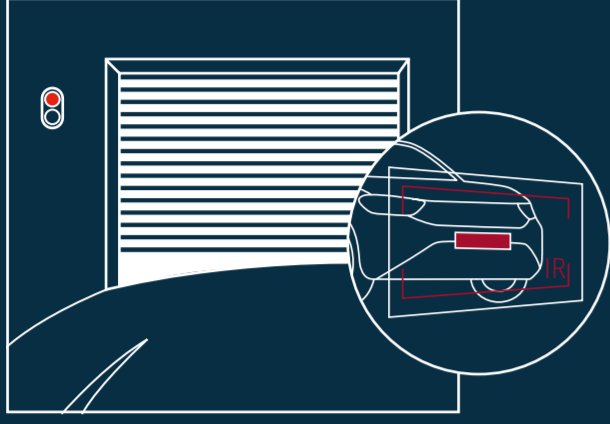


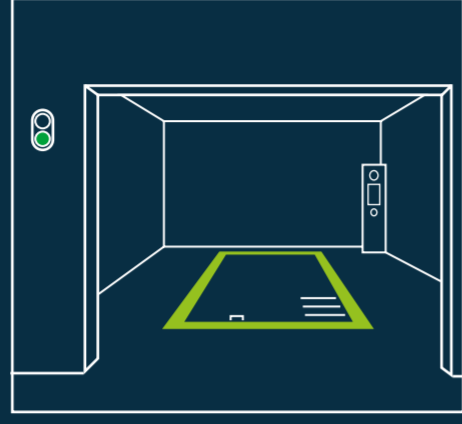
## PARKING YOUR CAR

Step 1: Drive up to gate



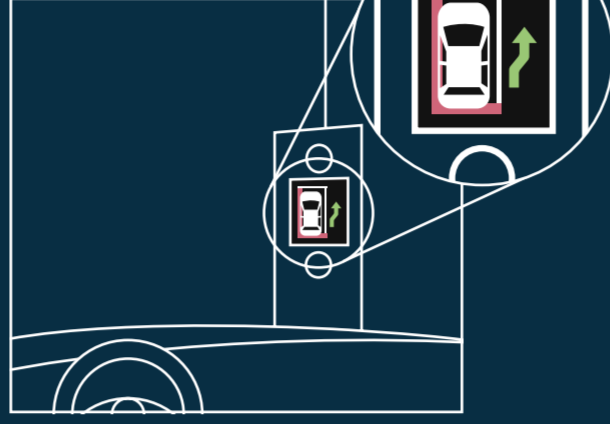
Drive up to the gate. Automatic number-plate recognition in operation.

Step 2: Drive into cabin



Drive in and park inside the marked area (green).

Step 3: Park your car



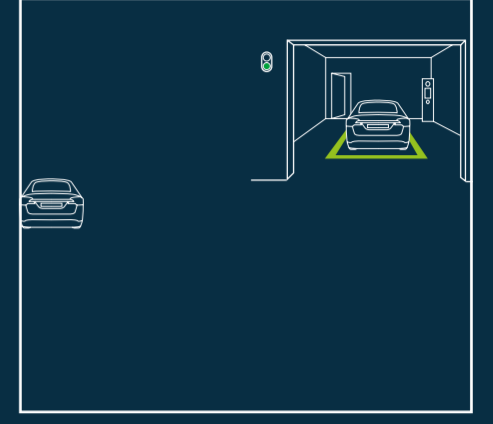
Follow the instructions on the guidance screen.

Step 4 (optional): EV-Charging



If charging, plug in your vehicle, ensure cable doesn't overhang the pallet.

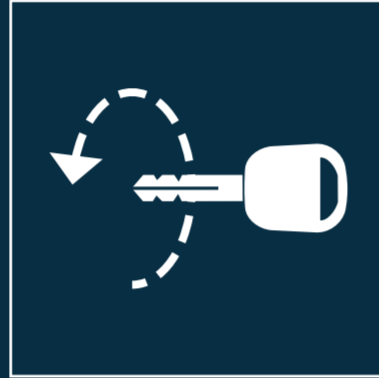
Step 5: Leave cabin



Leave the cabin and proceed to the terminal.

## SAFETY GUIDANCE

- Make sure your vehicle complies with the tolerances of the system.
- All passengers must leave the vehicle and cabin prior to starting the parking process.
- Under no circumstances should persons or animals remain in the car when the parking process starts.
- Keep this area clean and tidy, items left behind may interfere with the system operation and scanners.
- The user is responsible for the safe operation of the parking system and to advise any other users and or persons in the vicinity of the dangers.



Turn off



Activate brake



Remove antenna



Fold in mirrors



CCTV in operation

## AT THE TERMINAL

Step 1: Check in your car



Present your QR-Code at the terminal to start the parking process. Follow the directions on the screen.

Step 2: Check in complete



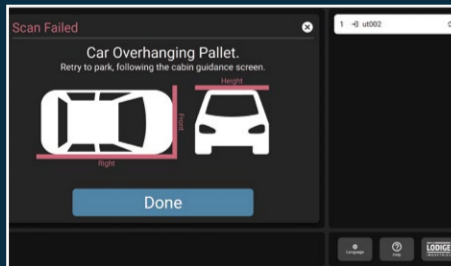
You have successfully parked your car. Have a nice day!

### IMPORTANT

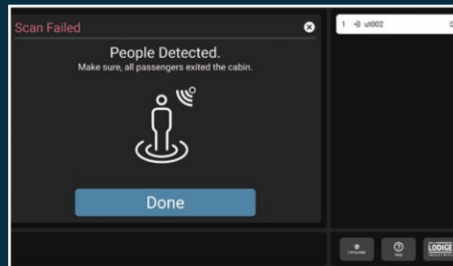
Do not leave the terminal until you see this message.



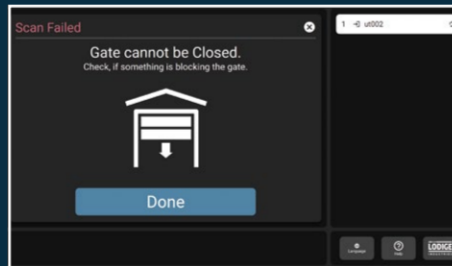
## CAN'T COMPLETE THE PROCESS? WHAT TO DO IF ANYTHING GOES WRONG



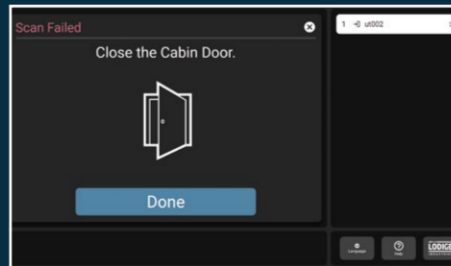
The car is overhanging the pallet. Go back to the cabin and follow the instructions on the screen.



Goods or people detected in the cabin. Make sure, no people or belongings are left behind.



Something is blocking the cabin gate. Go back to the cabin and remove any obstacles.



The cabin door did not close fully. Please close the cabin door.



We are taking care of the delay. Thank you for your patience!

## RETRIEVING YOUR CAR

Step 1: Request your car



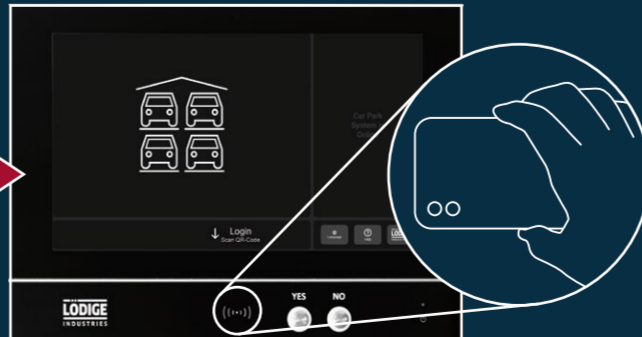
Present your QR-Code and confirm 'Outpark', to retrieve your car. Follow the instructions.

Step 2: Wait for your car



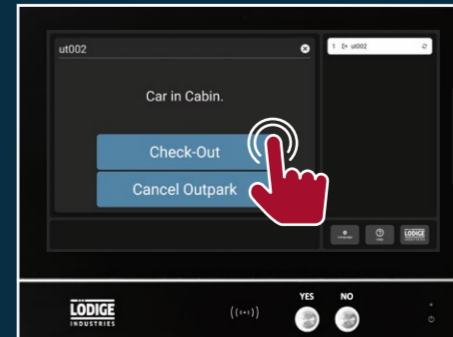
Your car is now waiting for you in the cabin.

Step 3: Confirm identification



Present your QR-Code again to continue.

Step 4: Check out



Press 'Check-Out' to leave or 'Cancel Outpark' to repark your vehicle.

Step 5: Go to your car



The cabin and gate are now open for you. Thank you for your visit.